
Greater Washington Area Historical Society

NEWSLETTER

Washington, Michigan

Volume 1, Number 4 www.washhistsoc.org February 2010

2009

DUES

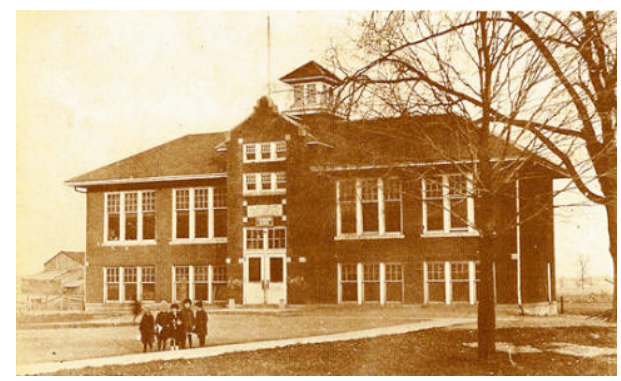
We finished out the year, as was mentioned in the last Newsletter, with the Annual Christmas Potluck.

Also if you haven't sent in your dues, do so now. Your dues money is so important to our existence.

Everybody had a good time and Muriel O'Brien, as always, had prizes and gifts for everyone. She always steals the show and she as well as Jean Holcomb pretty much do most of the work.

Individual \$10, Family \$15, & Life \$100

The food was excellent and the fellowship was even better. If you missed it, it definitely was your loss. Mark the next one on your calendar for December 16, 2010.



ALSO THE HISTORIC DATE PLAQUE FOR YOUR RESIDENCE OR BUSINESS IS NOW AVAILABLE.

**Send To:
Washington Historical Society
P. O. Box 94144
Washington, MI 48094
Attention: Ron Gordon, Treasurer**

NEWSLETTER

Washington, Michigan

CHECK OUT OUR WEBSITE. IT HAS JUST BEEN UPDATED. We now have links to many other sister Historical Societies for you to use.

www.washhistsoc.org

WHAT'S GOING ON FOR 2010

THE GREATER WASHINGTON HISTORICAL SOCIETY

The museum will be open Feb. 7th and Feb. 21st from 1:00 – 4:00pm and then closed until spring.

We will be putting on a contest to see what child can draw and color the best picture of George Washington. We have made contact with the Principal of the Washington Elementary School and he has put us in touch with the Art Teacher who services several schools. She feels this will be a good project for her classes and will have the pictures finished for viewing on Feb 7th at our Museum Opening. We will be judging the pictures on Feb. 21 and our Museum will be open for tours on both the Feb. dates.

The Contest will be open to all 3rd through 5th grade students. The Art Department will screen the best ones for judging. Gov. Bond will be presented to the winner at a lunch on Feb. 22, Washington's Birthday.

WHAT'S THIS?

A detached fragment of the terrestrial lithosphere, whether of igneous, sedimentary, or metamorphic origin, through hydraulic action or other attrition, when instrumentality of gravitational forces constantly acting to lower its center of gravity, thus resulting in a rotational movement around its temporary axis and with its velocity accelerated by any increase in the angle of declivity is, because of abrasive action produced by the incessant, but irregular contact between the surface and the contiguous terrain effectively prevented from accumulating on its external surface and appreciable modicum of the cryptocrystalline particles normally found there.

(In Case you didn't catch the meaning) try "a rolling stone gathers no moss".

We are collecting old pictures of people, events and buildings of Washington Twp.

Interior renovation of the Museum to provide added space for displays.

Expanding the genealogy section at the Museum for Washington Township.

Renovating the outside of the school building.

NEWSLETTER

Washington, Michigan

HELP THROUGH KROGER

It is easy to help the Greater Washington Area Historical Society preserve Historical documents through the Kroger Community Rewards program. All you have to do is:

- 1) Go to www.krogercommunityrewards.com and create an account.
 - Click on Sign In/Register (upper right-hand corner)
 - Click on Sign up Today in the “New Customer?” box.
 - Enter your zip code and click Search, click on your favorite store, enter your email address and create a password. Click Next.
 - Enter Profile Information and click next.
 - You will then receive an email message with a link to confirm your account.
 - Click on the link and log on.
 - Click Edit Kroger Community Rewards.
 - Enter Greater Washington Area Historical Society or our NPO number 90024, select our organization, and save changes.
- 2) Every time you use your Kroger Plus Card, the Society will receive a donation. It’s that easy.

CURRENT ACTIVITY:

George Washington Display has been enhanced with several pieces of blue glassware.

The genealogy collection has several new additions including a compilation of the Washington South Cemetery by Bob and Cherie Allen.

Business meetings are held the 2nd Thursday of each month at 10 a.m. Anyone is welcome to attend. The Museum is open to the public from June to November on the 2nd and 4th Sunday of the month from 1 to 4 p.m.

For Special Tours call (586) 786-5304 (leave message) or (248) 652-2458.

.....

SUPER SUNDAY ART and CRAFT SHOW JUNE 6TH, 2010.

ANTIQUÉ SHOW JUNE 13TH, 2010 includes an appraisal tent as part of the Washington Arts and Orchards Fest, the First Annual event.
